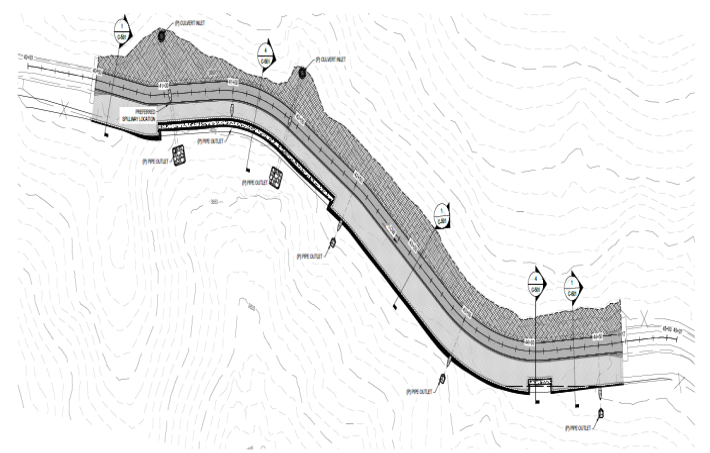
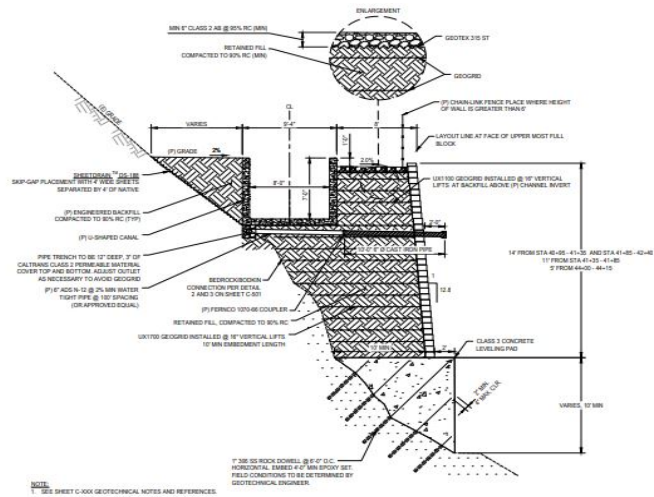




EID seeks an Assistant Engineer, Associate Civil Engineer,  
 or Senior Civil Engineer  
 \$7,911 to \$12,968 monthly  
*UP TO \$9,000 IN HIRING AND RETENTION INCENTIVES AVAILABLE*





# PLACERVILLE, CA



Ditch in 1922

Welcome to El Dorado County where lifestyle amenities are many and an exciting position awaits the right candidate at the El Dorado Irrigation District (District/EID).

Located in El Dorado County, the District lies in one of the most beautiful areas in California— on the western slope of the Sierra Nevada Mountains, west of world- renowned Lake Tahoe. A scenic drive along Highway 50, heading east from the Sacramento County line to Tahoe, takes you through the center of the District's 220-square-mile service area and highlights the extraordinary geographical diversity of this region.

The region offers unparalleled outdoor recreation – from high quality fishing, hiking, and skiing to boating, white-water rafting, and more. Its ideal location also offers a growing wine region with numerous local wineries and activities, along with the annual Apple-Hill season. High in the mountains, alpine lakes and wildlife populate wilderness areas, where quiet and solitude reign.

Water has been and continues to be an undeniable force in shaping the economic, ecological, and cultural aspects of the area. From the earliest days of America Indian habitation to the discovery of gold right here in the heart of the Mother Lode, sparking the statewide gold rush; from clusters of black oak and manzanita to the forests of the Sierra; from vineyards and orchards planted abundantly throughout the county to our growing population centers – water is the essential link.

## THE DISTRICT

We can trace our history back to the first hand-dug ditches that transported water to prospectors in the mid-1800s, but the District was not formally organized until 1925 under the Irrigation District Act (Water Code §§ 20500 et seq.). We still hold water rights that date from the gold rush days, and we continue to work on securing and maintaining a reliable water supply. Through negotiations with the U.S. Bureau of Reclamation (Bureau) and an Act of Congress, the District acquired Jenkinson Lake at Sly Park Recreation Area in late 2003, providing yet another critical local water supply. Additionally we have a repayment contract with the Bureau and exercise District consumptive water rights associated with Project 184 and historical agricultural activities for diversion from Folsom Lake to meet growing municipal and industrial demands of the region.



Flume under construction in 1923

Our customers' needs are as broad ranging as the area's stunning natural diversity. We provide drinking water, wastewater treatment, and recycled water for residential, commercial and industrial needs over significant portions of western El Dorado County. We own and operate a 21-megawatt hydroelectric power project that includes dams, 4 reservoirs, and 23 miles of flumes, canals, siphons, and tunnels. We also manage several outdoor recreation sites, including the Sly Park Recreation Area and a 48-unit campground at Silver Lake.

The District is governed by a five-member Board of Directors. Each member is elected from a different geographic division, and each serves a four-year term. There are no term limits for Board members. The Board typically meets twice a month during regularly scheduled, noticed public meetings and may hold a number of noticed, special meetings.

## THE POSITION

If you are looking to live in a beautiful part of California that provides a great quality of life, and to work for an agency that is not so large as to inhibit business agility, this opportunity may be perfect for you, so apply early. All Engineering staff report to the Headquarters campus located in Placerville to promote team collaboration and cohesiveness. This rare opportunity is due to recent retirements and internal promotions of existing engineering staff. The successful candidate will join a team of professional engineers who work on a diverse range of exciting projects for the benefit of the communities served by the District. These projects include but are not limited to the planning, design, construction and operation of District facilities including water and wastewater treatment plants, water and recycled water distribution and wastewater collection systems, and our green energy production via our hydroelectric generation systems.

To view full detail of class specification, go to [www.eid.org/about-us/employment/class-specifications](http://www.eid.org/about-us/employment/class-specifications)

## THE IDEAL CANDIDATE

The ideal candidate will be resourceful and committed to professional development. They should also have professional engineering experience in the planning, design, construction and maintenance of public infrastructure projects, coupled with project management skills. The ideal candidate will work in a collaborative manner and have demonstrated ability to manage construction projects from initial concept to completion, in an effective and prescribed manner. Public utility experience is highly desired.

**Assistant Engineer-** Equivalent to a Bachelor's degree from an accredited college or university in engineering or a related field. Possession of a valid certificate as Engineer-in-Training issued by the State of California Board of Registration for Professional Engineers and Land Surveyors is desirable.

**Associate Civil Engineer and Senior Civil Engineer-**A Bachelor's degree from an accredited college or university in engineering or a related field and must hold a license as a Professional Engineer (PE) with the State of California. Two to five years of responsible professional engineering experience.

## SALARY AND BENEFITS

### Salary

- Assistant Engineer- \$45.64-\$55.47 per hour
- Associate Civil Engineer- \$9,652.99-\$11,733.27 per month
- Senior Civil Engineer- \$10,669.36-\$12,968.68 per month
- Hiring bonus- \$1,500 - \$3,000 upon completion of 90 days of employment
- Retention bonus- \$1,500 - \$3,000 offered after 12 & 24 months

### Retirement

- CalPERS 2.0% @ 62 for new CalPERS members
- 2.0% @ 55 for Classic CalPERS members
- Retiree Health Care subject to District vesting schedule

### Insurance

- Medical, dental, and vision coverage for employees and dependents with cost share

### Other Benefits

- Paid Time Off commensurate with service time
- 13 Paid Holidays
- Exempt Administrative Leave (Associate Civil Engineer and Sr. Civil Engineer)



El Dorado Hills Wastewater Reservoir and Solar Plant

- Life Insurance
- Deferred compensation plan

# Application and selection process

**Open until filled. First review of applications to take place on January 12, 2024, or as soon as a sufficient number of qualified applications have been received, whichever occurs sooner.** Applications will be screened and candidates with the most relevant qualifications will be invited to participate in the selection process.

Interviews are tentatively scheduled for the week of January 22, 2024.

For more information, please contact Leslie Voong via email at [lvoong@eid.org](mailto:lvoong@eid.org) or call 530-642-4074.