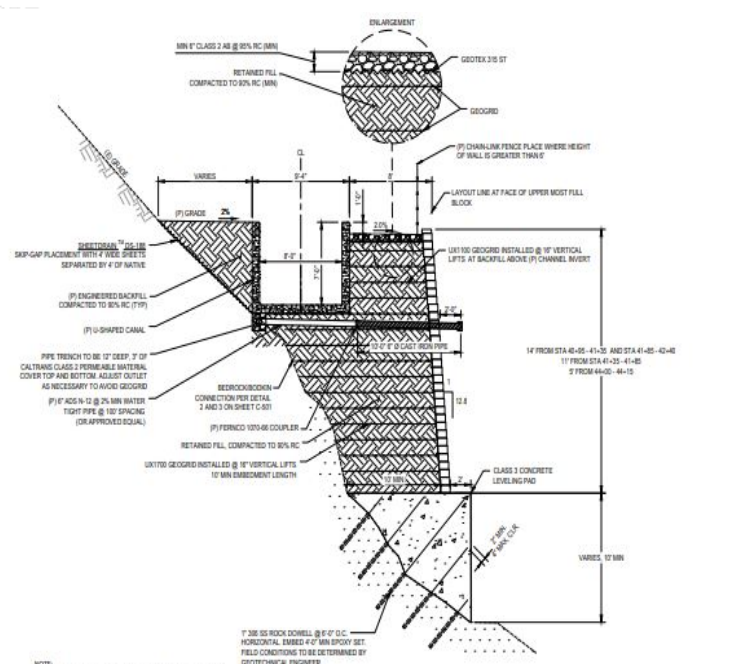
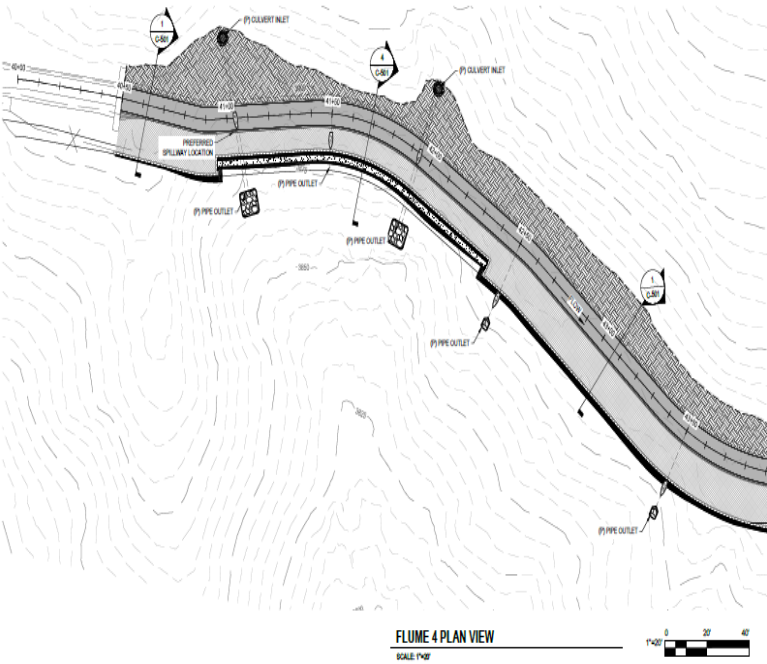




EID seeks a Senior Civil Engineer



PLACERVILLE, CA



Ditch in 1992

Welcome to El Dorado County where lifestyle amenities are many and an exciting position awaits the right candidate at the El Dorado Irrigation District (District/EID).

Located in El Dorado County, the District lies in one of the most beautiful areas in California—on the western slope of the Sierra Nevada Mountains, west of world- renowned Lake Tahoe. A scenic drive along Highway 50, heading east from the Sacramento County line to Tahoe, takes you through the center of the District’s 220-square-mile service area and highlights the extraordinary geographical diversity of this region.

The region offers unparalleled outdoor recreation – from high quality fishing, hiking, and skiing to boating, white-water rafting, and more. It’s ideal location also offers a growing wine region with numerous local wineries and activities, along with the annual Apple-Hill season. High in the mountains, alpine lakes and wildlife populate wilderness areas, where quiet and solitude reign.

Water has been and continues to be an undeniable force in shaping the economic, ecological, and cultural aspects of the area. From the earliest days of America Indian habitation to the discovery of gold right here in the heart of the Mother Lode, sparking the statewide gold rush; from clusters of black oak and manzanita to the forests of the Sierra; from vineyards and orchards planted abundantly throughout the county to our growing population centers – water is the essential link.

THE DISTRICT

We can trace our history back to the first hand-dug ditches that transported water to prospectors in the mid-1800s, but the District was not formally organized until 1925 under the Irrigation District Act (Water Code §§ 20500 et seq.). We still hold water rights that date from the gold rush days, and we continue to work on securing and maintaining a reliable water supply. Through negotiations with the U.S. Bureau of Reclamation (Bureau) and an Act of Congress, the District acquired Jenkinson Lake at Sly Park Recreation Area in late 2003, providing yet another critical local water supply. Additionally we have a repayment contract with the Bureau and exercise District consumptive water rights associated with Project 184 and historical agricultural activities for diversion from Folsom Lake to meet growing municipal and industrial demands of the region.



Flume under construction in 1923

Our customers’ needs are as broad-ranging as the area’s stunning natural diversity. We provide drinking water, wastewater treatment, and recycled water for residential, commercial and industrial needs over significant portions of western El Dorado County. We own and operate a 21-megawatt hydroelectric power project that includes dams, 4 reservoirs, and 23 miles of flumes, canals, siphons, and tunnels. We also manage several outdoor recreation sites, including the Sly Park Recreation Area and a 48-unit campground at Silver Lake.

The District is governed by a five-member Board of Directors. Each member is elected from a different geographic division, and each serves a four-year term. There are no term limits for Board members. The Board typically meets twice a month during regularly scheduled, noticed public meetings and may hold a number of noticed, special meetings

THE POSITION

The successful candidate will join a team of professional engineers who work on a diverse range of exciting projects for the benefit of the communities served by the District. These projects include but are not limited to the planning, design, construction and operation of District facilities including water and wastewater treatment plants, water and recycled water distribution and wastewater collection systems, and our green energy production via our hydroelectric generation systems.

The Senior Engineer is distinguished from other classes within the series by the level of responsibility assumed, complexity of duties assigned, independence of action taken, by the amount of time spent performing the duties, and by the nature of the public contact made. Employees perform the most difficult and responsible types of duties assigned to classes within this series, may provide technical and functional supervision over assigned personnel and perform the most difficult and complex professional engineering duties. Employees at this level are required to be fully trained in all procedures related to assigned areas of responsibility. If you are contemplating change, and would like to live and work in a beautiful location, and for a public agency, this opportunity may be right for you.

EXAMPLES OF ESSENTIAL DUTIES: *the duties specified below are representative of the range of duties assigned to this class and are not intended to be an inclusive list.*

- Plans, prioritizes, and reviews the work of staff assigned to a variety of professional engineering tasks associated with the planning, design, construction, maintenance and operation of District facilities.
- Develops schedules and methods to accomplish assignments, ensuring work is completed in a timely and efficient manner.
- Participates in evaluating the activities of staff, recommending improvements and modifications.
- Provides and coordinates staff training; works with employees to correct deficiencies.
- Serves as project manager for the more complex capital improvement projects including the development of Requests for Qualifications and Requests for Proposal, the development and monitoring of project budgets, management of outside design consulting firms and management of the construction phase.
- Administers construction projects, including overseeing and reviewing the work of construction management consultants or performing construction contract administrative duties; coordinates construction supervision and inspection and provides technical assistance to contractors and subcontractors by interpreting specifications, providing responses to requests for information, conducting submittal reviews, reviewing the quality of workmanship, verifying and approving progress payments, reviewing retainages, and authorizing certification of substantial and final completion.
- Prepares and makes presentations to the Board of Directors regarding project recommendation, award and updates; meets with regulatory agencies and the public regarding District projects.
- Prepares complex engineering studies and reports; coordinates projects with other District departments, divisions, outside agencies, consultants, and developers; prepares District master plans.
- Prepares a variety of detailed and complex technical reports, documents, and correspondence; prepares technical specifications; prepares and revises design and construction standards.
- Participates in budget preparation and administration, including the capital improvement budget; prepares cost estimates for budget recommendations; submits justifications for services, labor, materials and related resources for utilities projects and/or programs; monitors and controls expenditures.
- Researches and recommends use of consultants and contractors for various projects; negotiates contracts and reviews work plans, monitors progress and authorizes payments according to contract terms and conditions.
- Plans, prepares and administers consulting and construction contracts and agreements; participates in contract negotiations.
- Manages Dam Safety Program required by the Federal Energy Regulatory Commission and California Division of Safety of Dams including regulatory negotiations and correspondence, conducting functional and tabletop dam failure exercises for emergency action plans, developing standard operating procedures and implementing dam surveillance monitoring plans to ensure overall program quality and compliance.
- Negotiates power sales contracts; ensures District is meeting FERC requirements related to power sales.
- Performs the most difficult work related to the performance of professional engineering functions related to District facilities
- Confers with developers and engineers for review and approval of proposed commercial and residential development plans.
- Performs plan check and approval of drawings submitted for commercial and residential development to ensure conformance with specification and standards.
- Builds and maintains positive working relationships with co-workers, other District employees and the public using principles of good customer service.
- Performs related duties as assigned

THE IDEAL CANDIDATE

The ideal candidate will have professional engineering experience in the planning, design, construction and maintenance of public infrastructure projects, coupled with project management skills. The ideal candidate will work in a collaborative manner and have demonstrated ability to manage construction projects from initial concept to completion, in an effective and prescribed manner. Must hold a license as a Professional Engineer (PE). Public utility experience is highly desired.

A Bachelor's degree from an accredited college or university in engineering or a related field and a California Professional Engineer in Civil Engineering license is required in addition to five years of responsible professional engineering experience including three years similar to Associate Civil Engineer with the El Dorado Irrigation District.

SALARY AND BENEFITS

Salary

- Senior Civil Engineer- \$10,348.56-\$12,578.74 per month

Retirement

- CalPERS 2.0% @ 62 for new CalPERS members
- 2.0% @ 55 for Classic CalPERS members
- Retiree Health Care subject to District vesting schedule

Insurance

- Medical, dental, and vision coverage for employees and dependents with cost share

Other Benefits

- Paid Time Off commensurate with service time
- 12 Paid Holidays
- Exempt Administrative Leave
- Life Insurance
- Deferred compensation plan



El Dorado Hills Wastewater Treatment Plant Storage Reservoir and Solar Plant

HOW TO APPLY

Apply early, first review of applications to take place on August 21, 2023 or as soon as a sufficient number of qualified applications have been received, whichever occurs sooner. Applications will be screened and candidates with the most relevant qualifications will be invited to participate in the selection process.

Interviews are tentatively scheduled for August 30, 2023.

For more information, please contact Leslie Voong via email at lvoong@eid.org or call 530-642-4074