

Castle Crags  
SPI Redding District Timberland in Foreground



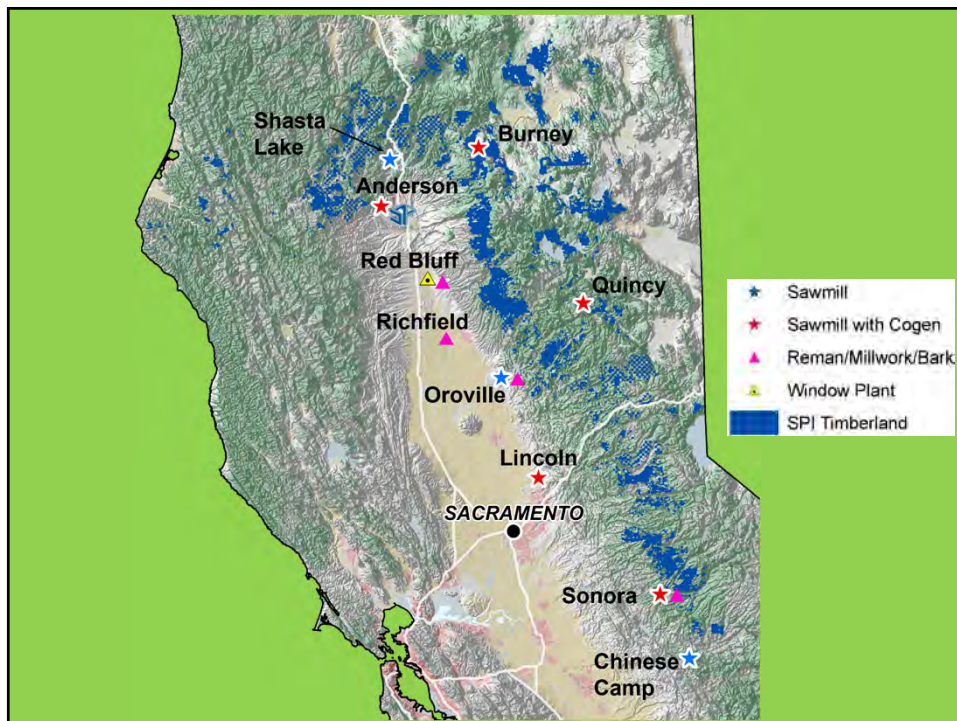
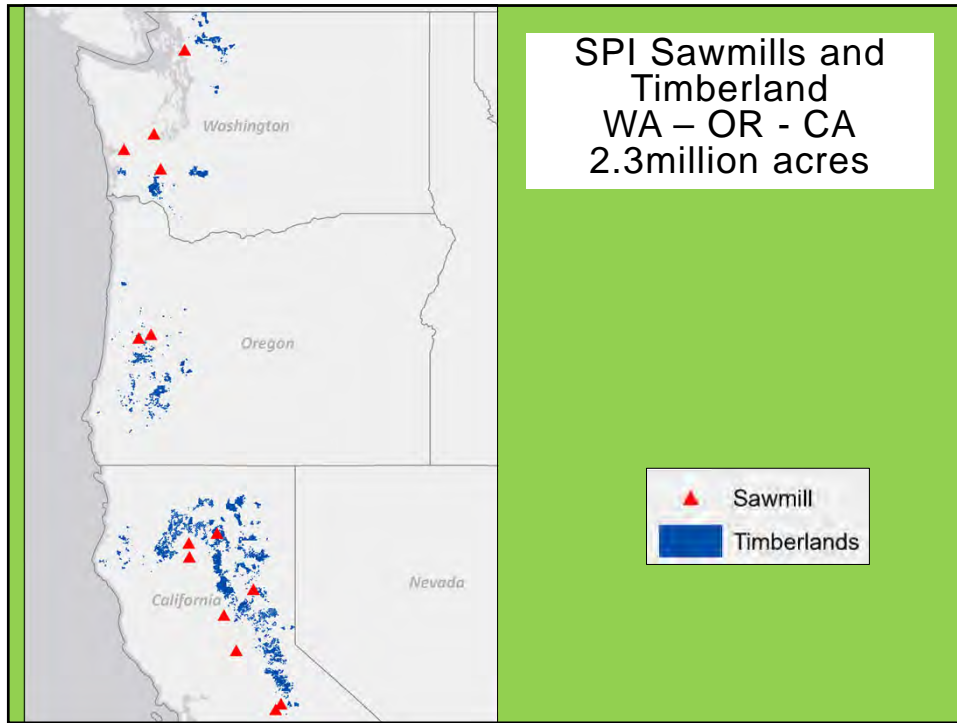
## Mountain Counties Water Resources Association

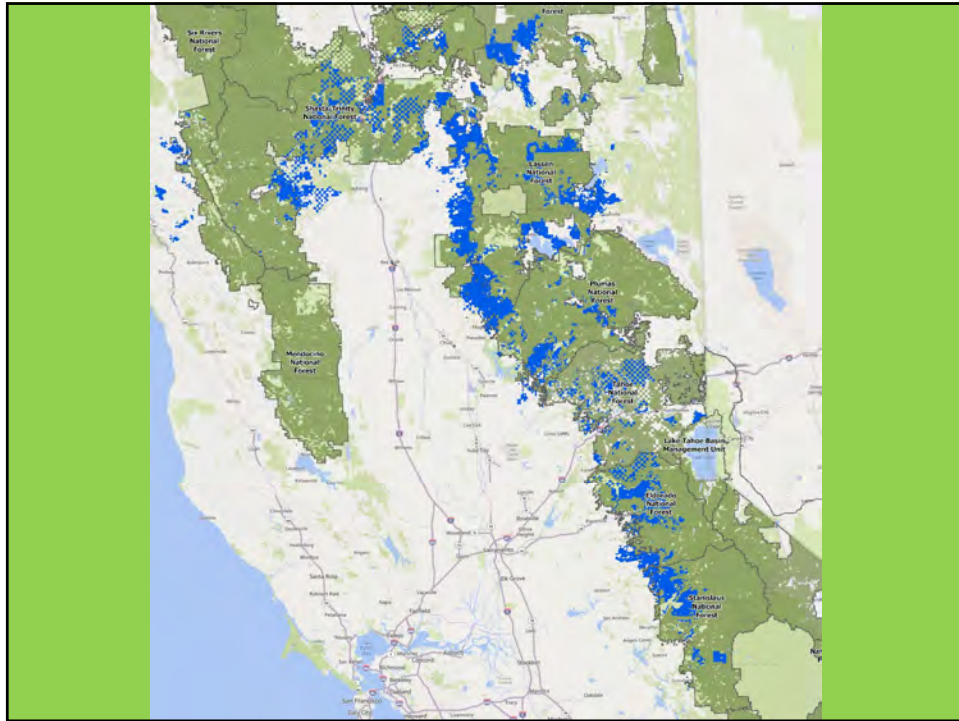
Sierra Pacific Industries  
Ed Murphy  
October 27, 2021



SIERRA PACIFIC WINDOWS SIERRA PACIFIC INDUSTRIES







## Forest Change Over Time



## Forest Change Over Time



## Ecosystem Change – Fire Suppression

1925



1993

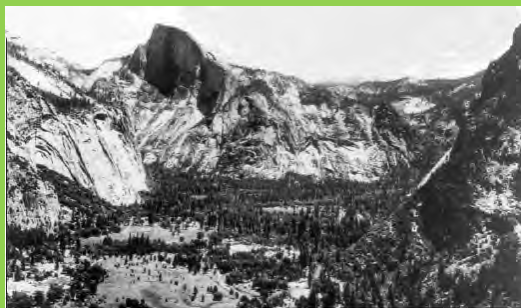


Lassen  
National  
Park,  
Shasta  
County,  
California

## Ecosystem Change – Fire Suppression

Yosemite  
Valley

1899



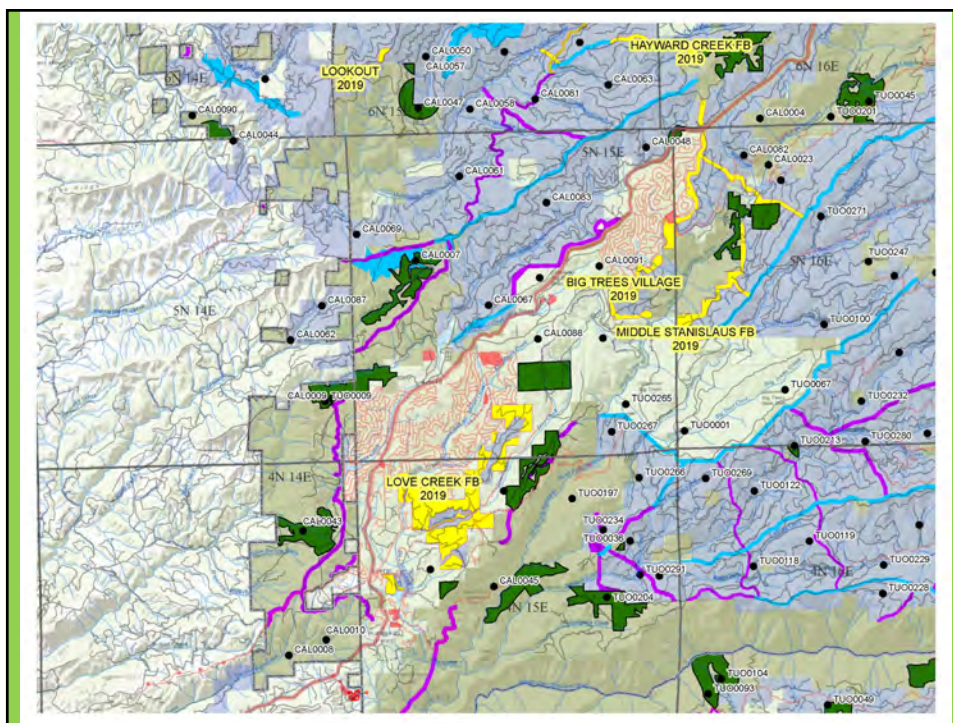
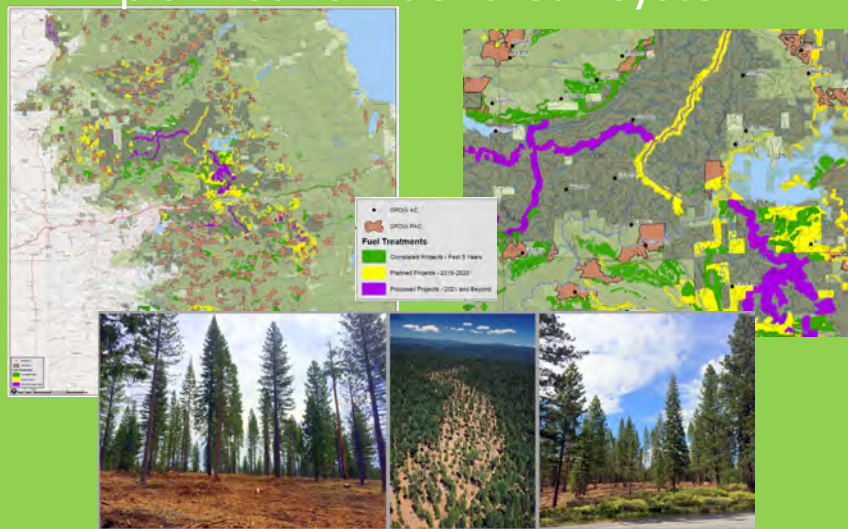
1994

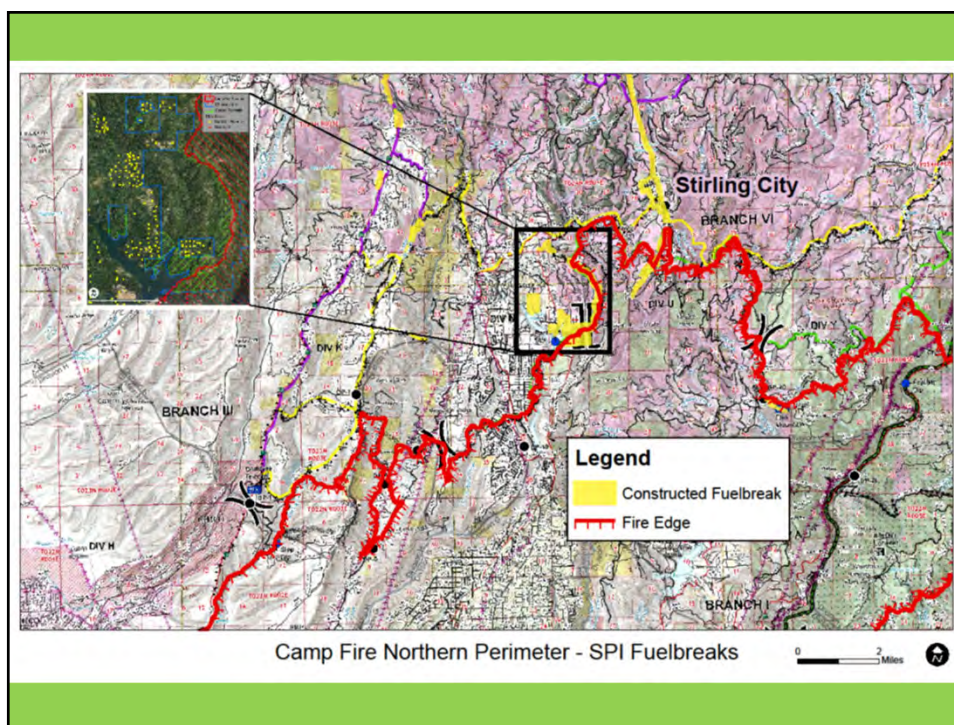
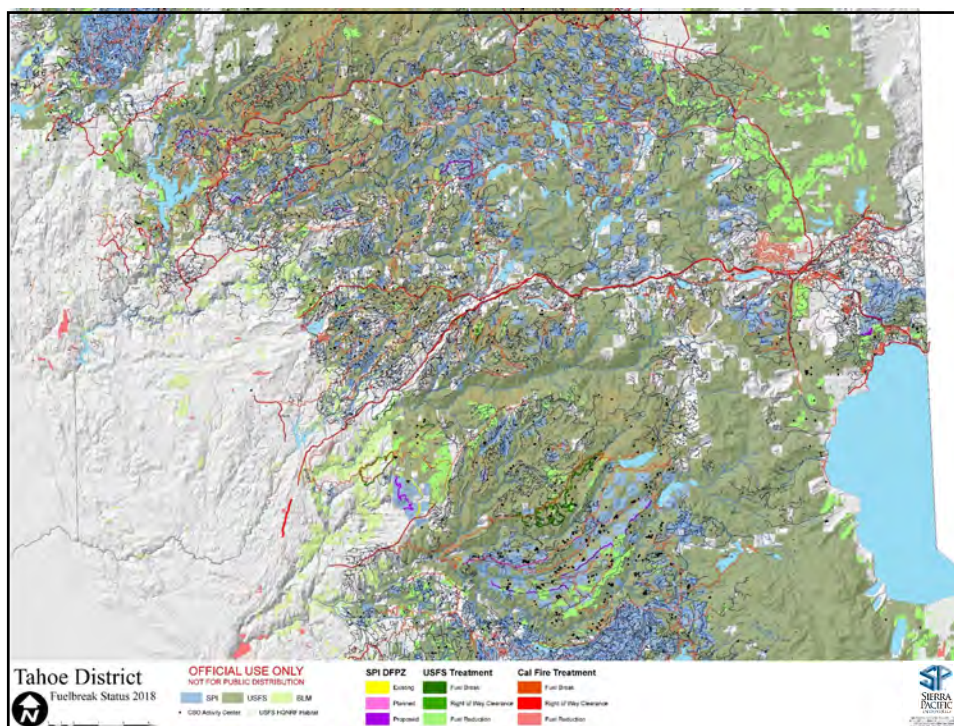




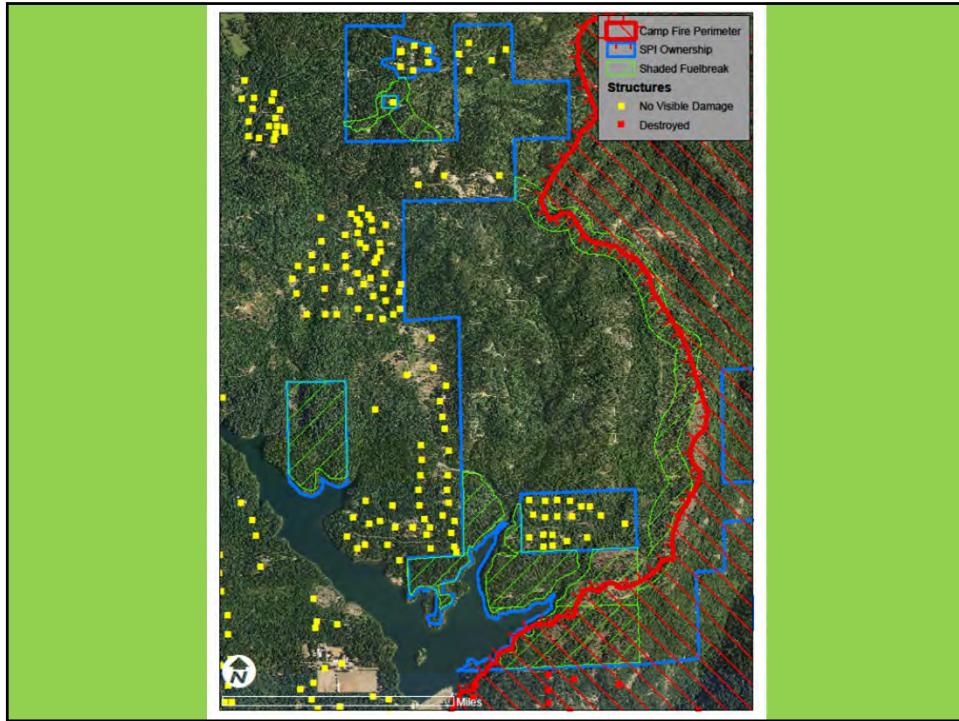
	USDA, Forest Service	OMB 0596-0217 FS-1500-15
FS Agreement No. <u>20-MU-11052007-022</u>		
Cooperator Agreement No. _____		
<p style="text-align: center;"><b>MEMORANDUM OF UNDERSTANDING</b> Between <b>SIERRA PACIFIC INDUSTRIES,</b> AND <b>CALIFORNIA DEPARTMENT OF FORESTRY AND FIRE PROTECTION,</b> AND <b>NATIONAL FISH AND WILDLIFE FOUNDATION,</b> AND THE <b>USDA, FOREST SERVICE</b> <b>PACIFIC SOUTHWEST REGION</b></p>		
<p>This MEMORANDUM OF UNDERSTANDING (MOU) is hereby made and entered into by and between Sierra Pacific Industries, hereinafter referred to as "SPI," California Department of Forestry and Fire Protection referred to as "CAL FIRE," the National Fish and Wildlife Foundation referred to as "NFWF," and the United States Department of Agriculture (USDA), Forest Service, Pacific Southwest Region, hereinafter referred to as the "U.S. Forest Service." This MOU supersedes and replaces the MOU dated August 30, 2017 (CSO MOU), and April 19, 2019 (NSO MOU) between the parties relating to this subject matter.</p>		

# Entire Sierra Nevada mapped and planned for fuel break system







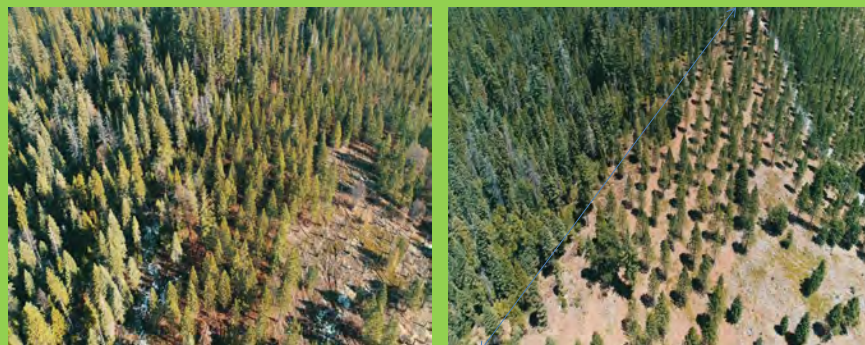








## Love Creek Fuel Break Arnold, California



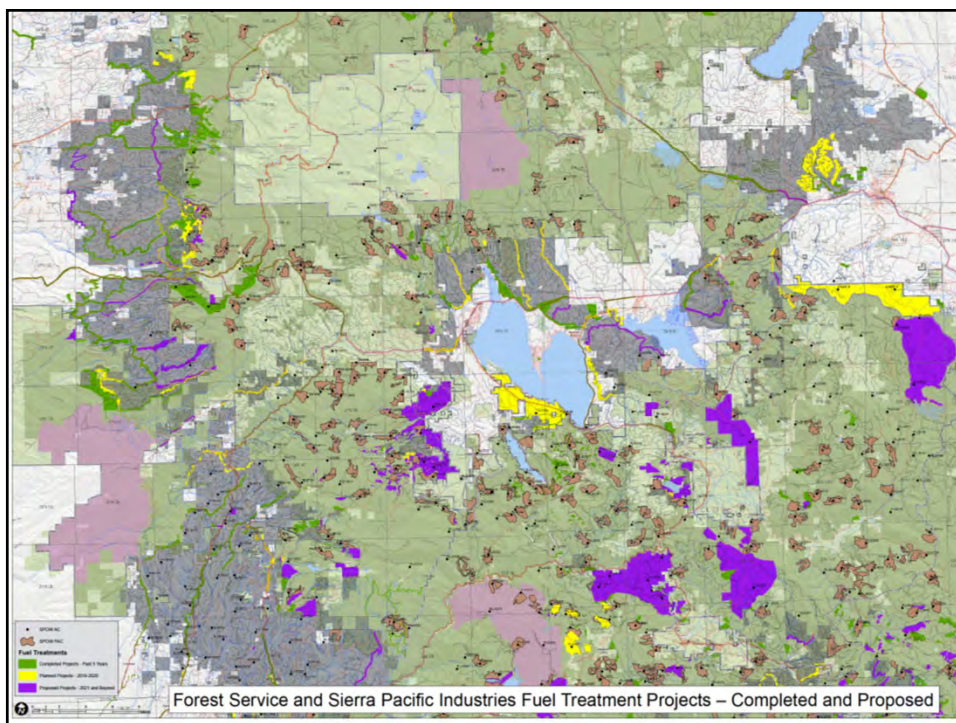


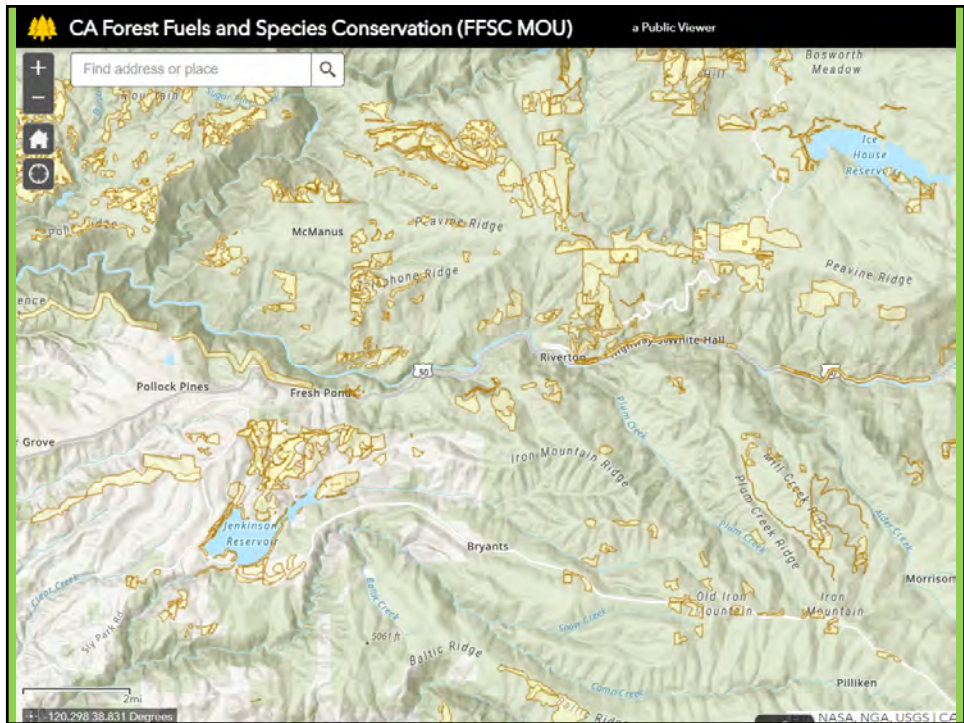
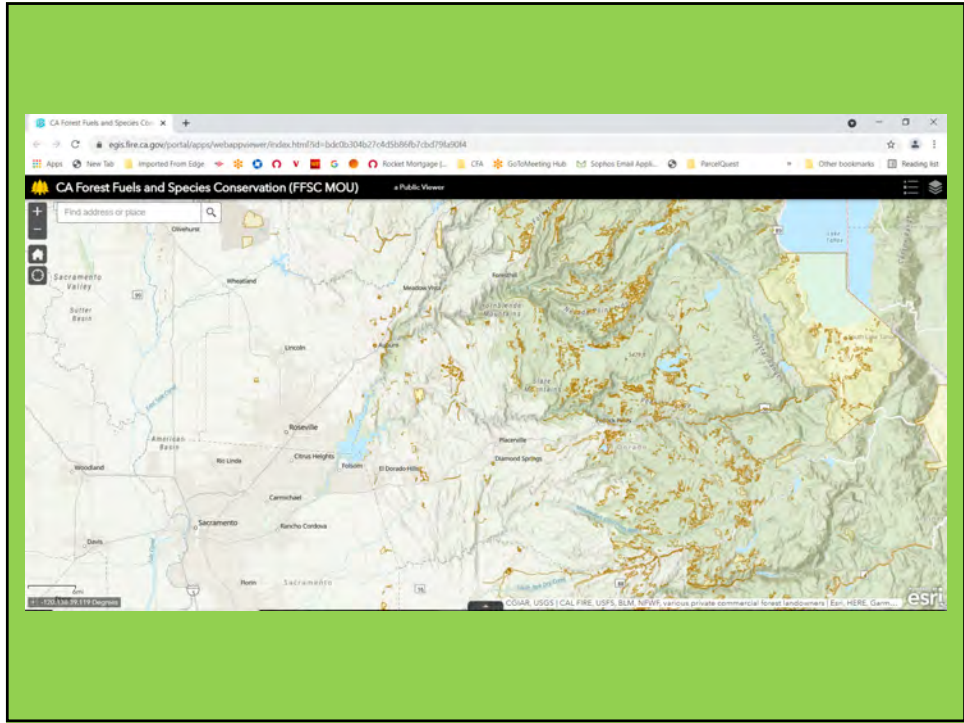
Under-burning – Calaveras Big Trees State Park Perimeter



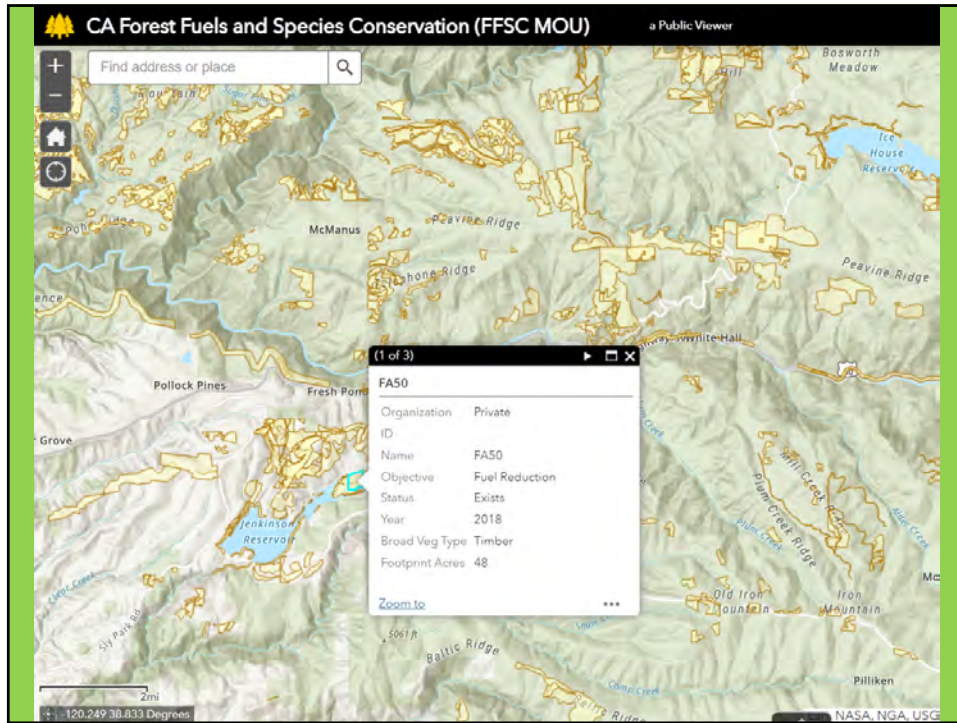
Under-burning – Calaveras Big Trees State Park Perimeter











24 Years after replanting on private land we can have a healthy forest



Questions?



*Growing Forests for Our Future...*